



Feature

- ◆3V Lithium Battery Operation
- ◆Clock with Month, Date, Hour, Minute
- ◆Very Low Power Dissipation
- ◆32768 Hz crystal controlled operation
- ◆Debounce circuit on switch input
- ◆Protection against static discharge
- ◆One-touch operation

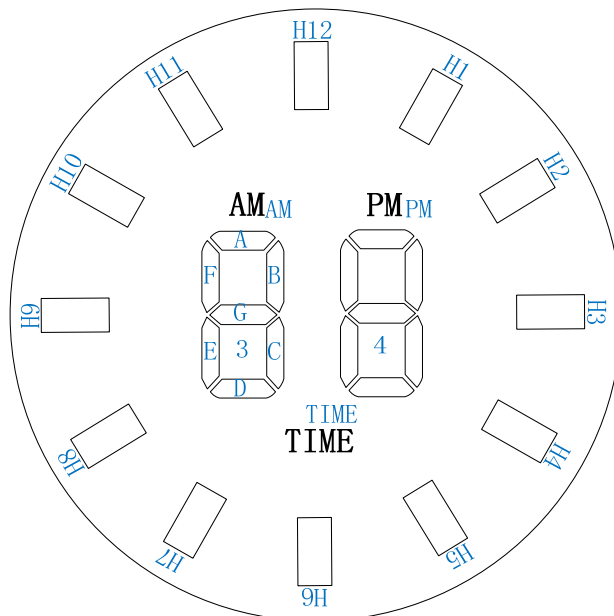
特点

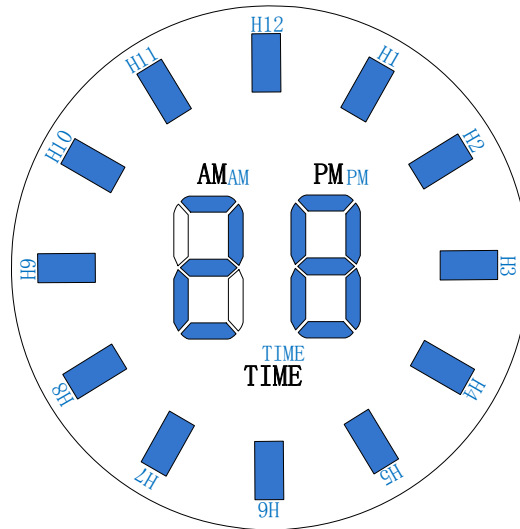
- ◆3V 锂电池供电
- ◆可显示月、日、时、分
- ◆低功耗
- ◆32768 Hz 晶振
- ◆开关输入防弹跳
- ◆带静电保护
- ◆单键操作

ELECTRICAL CHARACTERISTICS 电特性

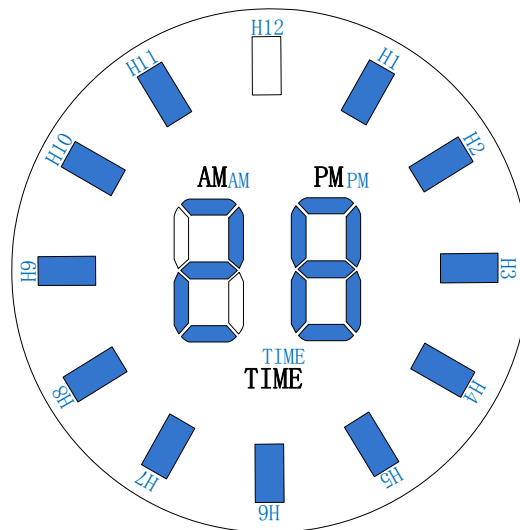
Characteristics	Sym	Min	Typ	Max	Unit	Remarks
Operating Voltage 工作电压	VDD	2.3	3.0	3.6	V	-
Quiescent Current 静态电流	ISB	-	1	3	uA	No Load
Operating Current 工作电流	IOP	-	-	60	mA	LED 全显
Input High Voltage 输入高电压	VIH	VDD-0.3	-	VDD	V	-
Input Low Voltage 输入低电压	VIL	VSS	-	VSS+0.3	V	-
Switch Activation Current 按键开关电流	ISW	-	-	3	uA	VIN=VDD
Oscillation Frequency 振荡频率	FOSC	-	32768	-	Hz	-
LED Frequency LED 频率	FLED	-	128	-	Hz	-
Time Stability 时间稳定度	TSTB	-	1	5	ppm	2.5~3.3V

LED 字形显示





VDDSP 脚悬空时, 显示时间为 12: 28
VDDSP 脚绑定到 VDD 时, 显示时间为 11: 28



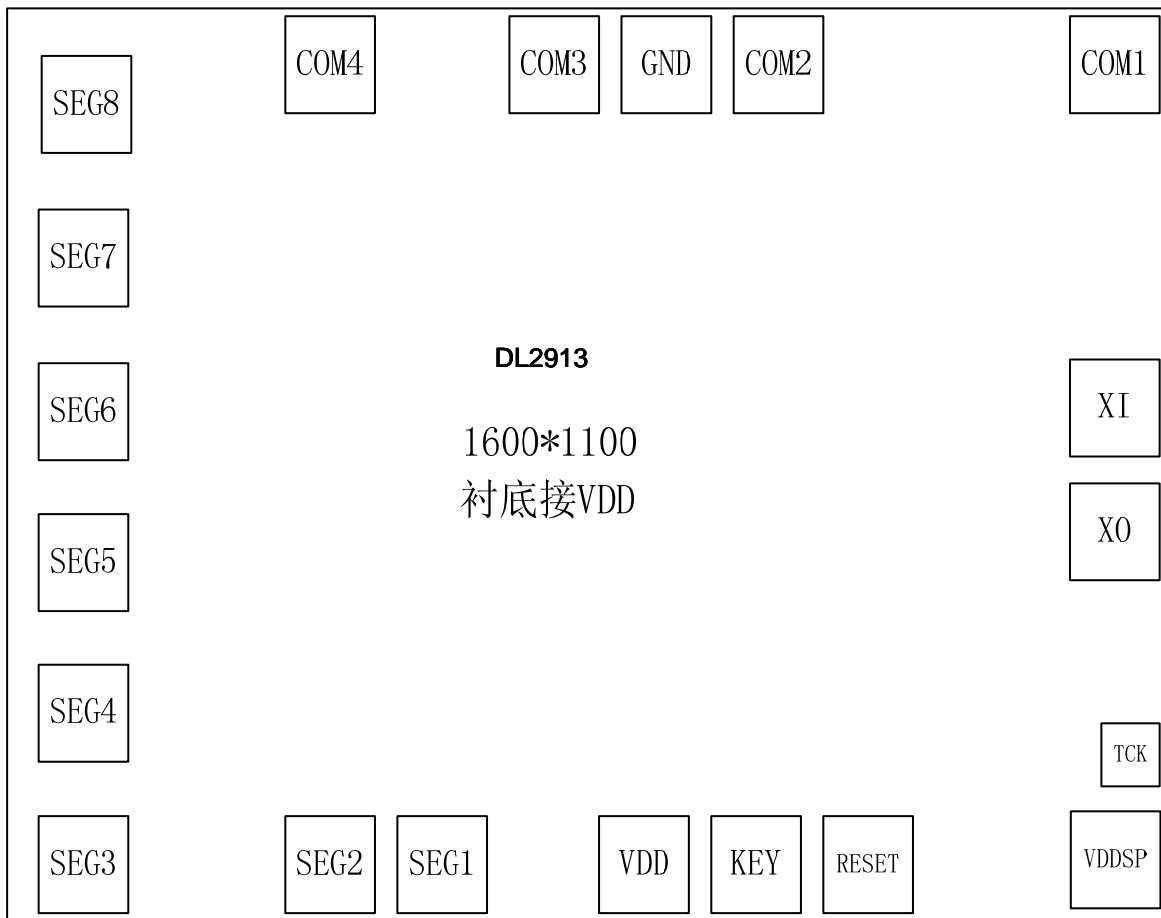
VDDSP 脚悬空时, 显示时间为 11: 28



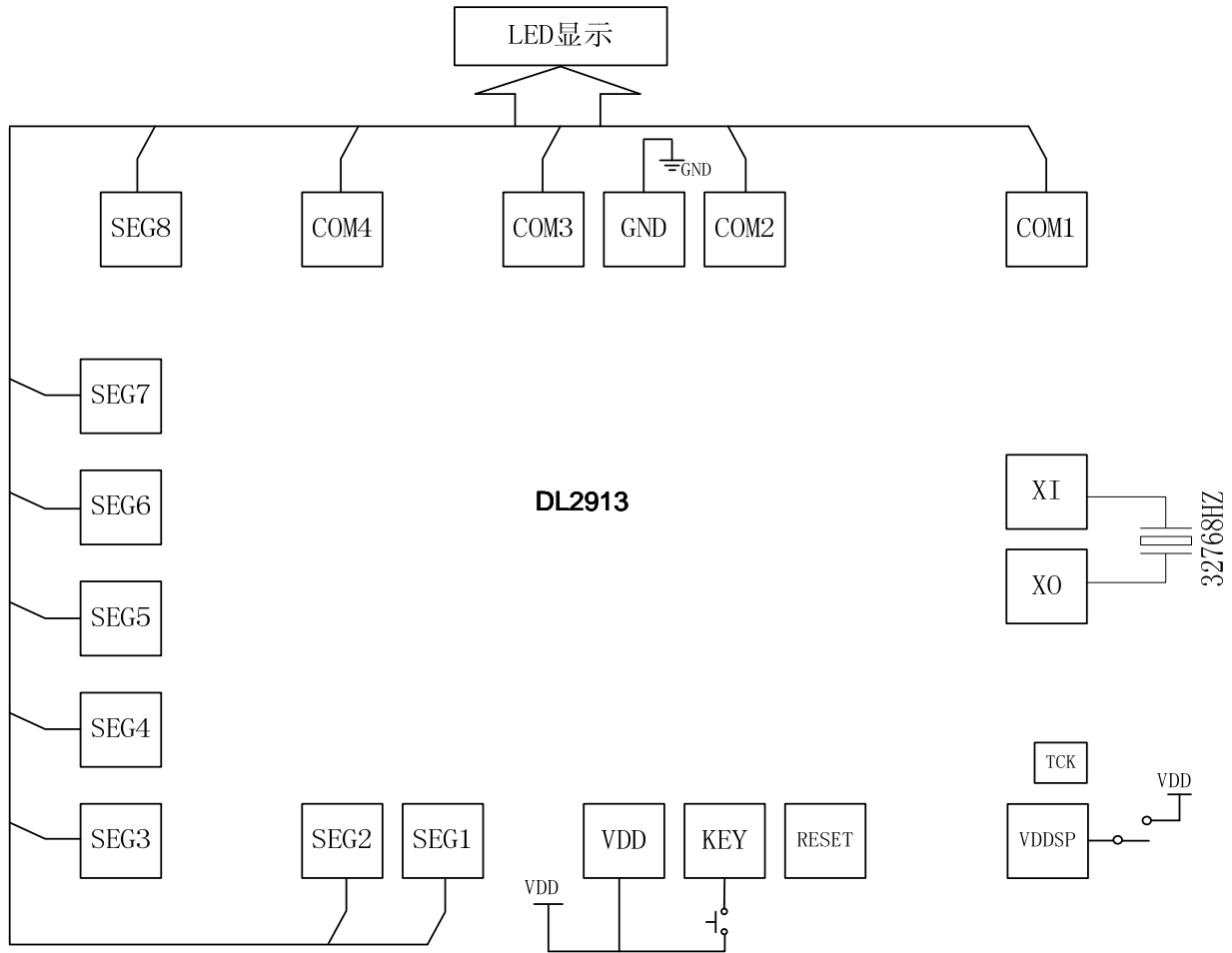
LED 字段分配

LED PIN	IC PIN	COM1	COM2	COM3	COM4
1	COM1	COM1			
2	COM2		COM2		
3	COM3			COM3	
4	COM4				COM4
5	SEG1	H12	H1	3D	4D
6	SEG2	H11	H2	3C	4C
7	SEG3	H10	H3	3E	4E
8	SEG4	H9	H4	3G	4G
9	SEG5	H8	H5	3F	4F
10	SEG6	H7	H6	3B	4B
11	SEG7			3A	4A
12	SEG8		AM	TIME	PM

Pad Diagram 脚位图

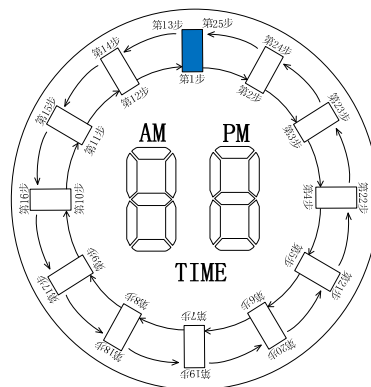


RECOMMEND APPLICATION 应用电路



备注: VDDSP 脚绑定到 VDD 时, 在小时计时显示状态, H12 LED 都会亮显;
VDDSP 脚悬空时, 在小时计时显示状态, H12 LED 只在 12 点时亮显。

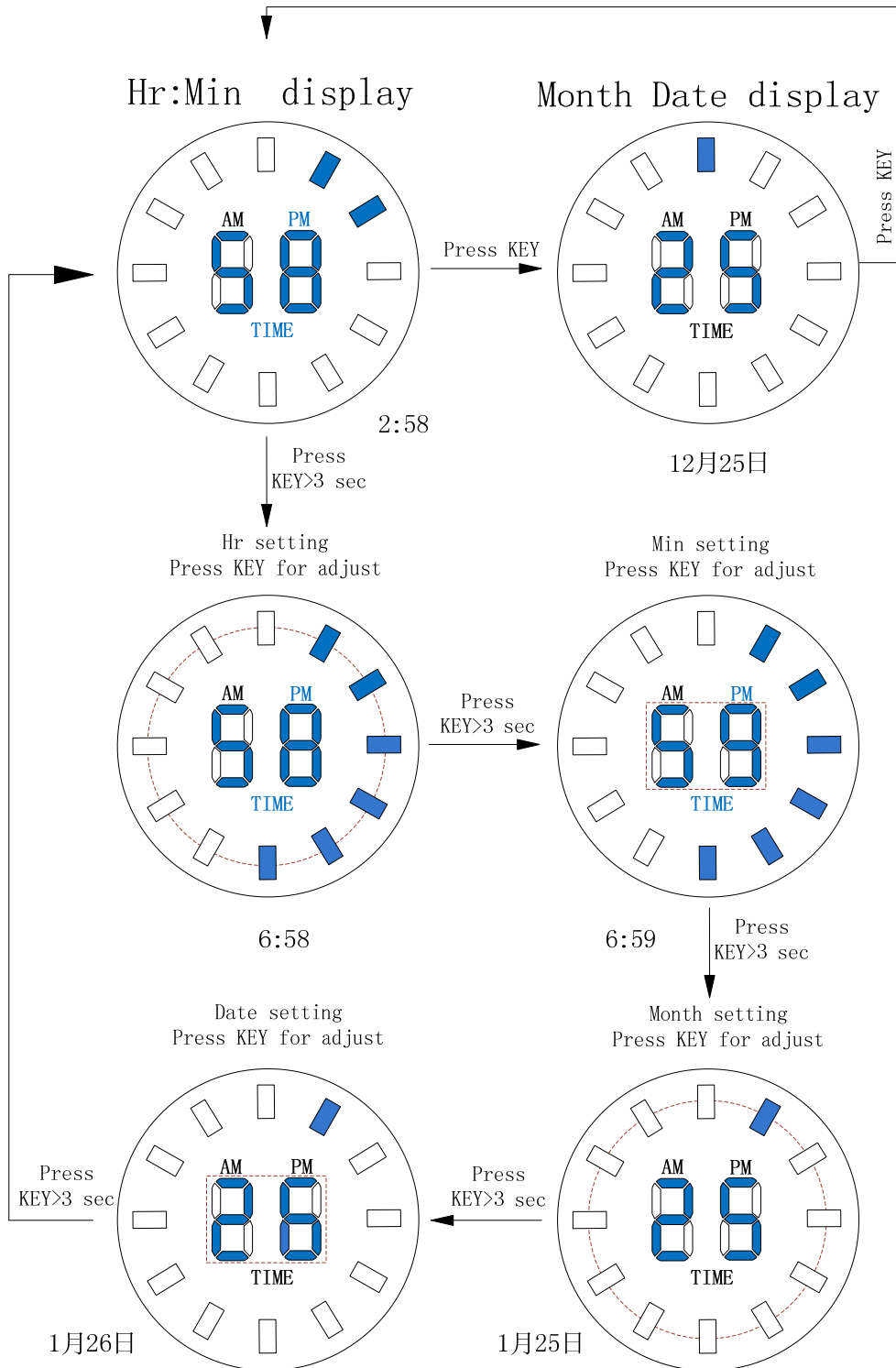
动画描述



备注: 从动画第1步到25步依次逐渐单一点亮。



设定流程和按键操作



注意事项:

1. 以上资料如有更新, 将不另行通知, 请用户在使用前先确认手中的资料是否为最新版本!
2. 此资料推荐的应用电路仅供参考, 用户可根据各自产品的应用特点加以改进, 对于应用不当造成的产品问题, 我司将不承担任何责任。